



SHINING 3D

EinScan Pro HD

HIGH DEFINITION, MULTI-FUNCTIONAL HANDHELD 3D SCANNER

Improves the Efficiency of High-quality 3D Modeling

- Impressive high resolution for fine details
- Handle dark or casting metal surface with less limitations
- Fast scan speed for high efficiency



EinScan Pro HD

Inherited multi-functional and modular design of EinScan Pro series handheld 3D scanner, EinScan Pro HD delivers unparalleled performance in capturing high resolution and accuracy by handheld scanning. Exceptional versatility and powerful optimizations come together for the ultimate high-efficiency and professional-grade 3D scanning experience. It is reliable assistant for designers and engineers who care about high quality 3D modeling.



32cm



Handheld HD Scan Mode



Impressive High Resolution for Fine Details

By adopting a new structure light projection modular, the stripe pattern scanning which was traditionally used in Fixed Scan Mode is now utilized to Handheld HD Scan Mode. By 0.2mm minimum point distance setting with optimized algorithm, it brings high resolution and accuracy in handheld scanning as good as under fixed scan.



Modular Design for a Wide Range of Applications by Multi Scan Modes and Data Alignments

Modular designed Color Pack, Industrial Pack as optional add-ons to EinScan Pro HD extend your scanning experience for more applications. Multiple positioning methods, including feature alignment, marker alignment, turntable coded targets alignment, manual alignment and texture alignment (with Color Pack) , greatly enhance the scanning efficiency without additional preparation.

*Optional Add-on



Color Pack

Gets the full-color texture with geometry.
Improves scanning efficiency through texture alignment.

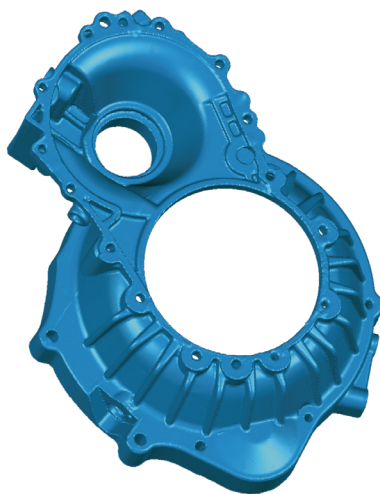


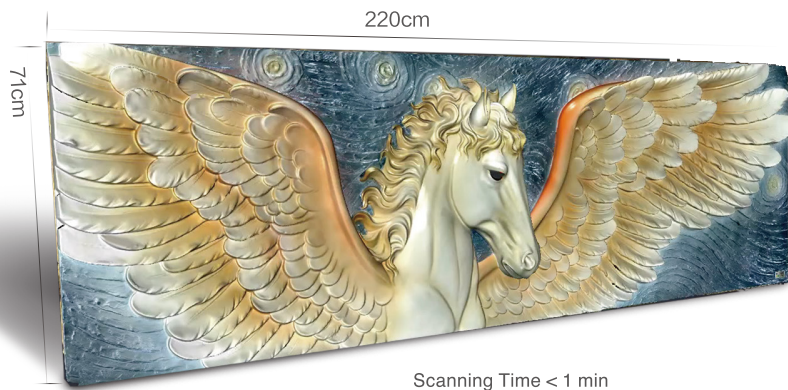
Industrial Pack

Makes a static automatic scan on a turntable possible for a better accuracy.

Less Limitations of Scan Objects

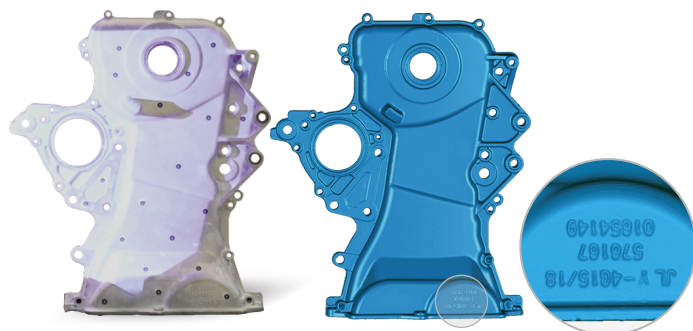
With new lighting projection hardware and software algorithm, EinScan Pro HD is capable to scan a wider range of objects of dark or black color and casting metal surface, enriching the capability for 3D scanning of materials.





Fast Scanning Speed and Data Transmission

EinScan Pro HD has a dramatic breakthrough in scanning capability, processing up to 3,000,000 points per second under handheld scan mode, and less than 0.5s for every single frame in Fixed Scan Mode. USB 3.0 provides high speed data transmission.



High Accuracy for High Quality 3D Modeling

By kinds of positioning methods, both scanner or objects can be moved during scanning. It delivers accuracy up to 0.04 mm in Fixed Scan Mode. Under handheld scanning mode by marker alignment, the volumetric accuracy is up to 0.045mm+0.3mm/m.

Take the Portable EinScan Pro HD Anywhere You Go

Ergonomic designed EinScan Pro HD with a light weight, you can easily take the scanner anywhere you go; easy plug-and-play lets you run the scanner without complex installation; the compact size allows scanner to move freely with unlimited scanning experience.



EXScan Pro: Powerful and Intuitive Software

The EinScan Pro HD comes with EXScan Pro software to ensure your scanning experience is as simple and user-friendly as possible, catering to both beginners and experienced users. It boasts a set of useful features for the Fixed mode, the Handheld mode, and for the post-processing workflow.

- **Improved Fixed Scanning Features:** One-click Scan, Background Cutting, Real-time Marker Recognition.
- **Practical Handheld Scanning Features:** Auto Cutting Plane, Marker/ Point Cloud Editing, Flexible Point Distance, Scan Rewind, Data quality indicator.
- **Smooth Post-Processing Features:** Hole-filling, Mirror, Scale, Object Mover, Quick Alignment, Marker/ Point Cloud/ Mesh measurement, Multiple Data Display types, Model Display.
- **Seamless Integration with other Platforms:** Texture Mapper Lite Plugin, Free Shining3D digital cloud space, Supports 3Dconnexion SpaceMouse.

SHINING 3D Bundles

SHINING 3D EinScan Pro Series 3D scanners combined with Geomagic Control X and Design X, allowing you to create accurate CAD models based on scan data or start your inspection workflow.



VERSATILE APPLICATIONS



For Higher Efficiency & Quality

- Manufacturing & Reverse Engineering
- 3D Modeling for Customized Product and Service via 3D Printing



For Unlimited Inspiration

- Art & Heritage
- Design



For A Healthier Life

- Digital Medical Analysis
- Orthotics & Prosthetics



For Creative Imagination

- Virtual Display

For More Shining Ideas, Explore Unlimited Applications...



TECHNICAL SPECIFICATIONS

EinScan Pro HD

Scan Mode	Handheld HD Scan	Handheld Rapid Scan	Fixed Scan with Turntable (with Add-on: Industrial Pack)	Fixed Scan without Turntable (with Add-on: Industrial Pack)
Scan Accuracy	up to 0.045 mm	up to 0.1 mm	0.04 mm (Single Shot Accuracy)	
Volumetric Accuracy[1]	0.3 mm/m (Markers Alignment)	0.3 mm/m (Markers Alignment)	/	/
Scan Speed	10 frames/s 3,000,000 points/s	30 frames/s 1,500,000 points/s	Single Scan<0.5 s	
Point Distance	0.2 mm-3 mm	0.25 mm-3 mm	0.24 mm	
Single Scan Range		209*160mm-310*240mm		
DOF		±100 mm		
Working Center Distance		510 mm		
Light Source		LED		
Align Mode	Marker Alignment, Feature Alignment [2], Hybrid Alignment [3]	Marker Alignment, Texture Alignment [4], Feature Alignment, Hybrid Alignment	Turntable Coded Targets, Feature, Marker, Manual Alignment	Marker, Feature, Manual Alignment
Texture Scan		Yes (with Add-on: Color Pack)		
Outdoor Operation		Set up the shelter or cover to avoid direct sunlight		
Special Scan Object		For the transparent or highly reflective objects, please spray powder before scanning.		
Software Included		ExScan Pro		
Data Format		OBJ, STL, ASC , PLY, P3, 3MF		
Scan Head Weight (include a USB cable)		1.13 kg		
OS System Support		Win10, 64bit		
Recommended Configuration		Graphics card: NVIDIA RTX2060 and higher; video memory: >6G, processor: i7-9750, memory: 64G; interface: high-speed USB 3.0		
Required Configuration		Graphics card: NVIDIA GTX1080 and higher; video memory: >4G, processor: Intel i7-8700, memory: 16G; interface: high-speed USB 3.0		

[1]. Volumetric accuracy refers to the relationship between 3D data accuracy and object size; the accuracy is reduced by 0.3mm per 100cm.

The conclusion is obtained by measuring the center of sphere under marker alignment.

[2]. Select this alignment when scanning objects with rich geometrical features on the surface.

[3]. Hybrid alignment means marker alignment and feature alignment can be switched automatically.

[4]. This alignment needs Color Pack assisting, and requires rich color texture information on the surface of the object.

SHINING 3D reserves the right to explain any alteration of the specifications and pictures. Please refer to einscan.com to find more information.