



# Open a High-speed Era of Professional Applications

EXTRAORDINARY SPEED



Guider 3 **Ultra**

## Dual-extruder structure unleashing designs

- ◆ **3** second tool-free disassembly of the hot end, offering easier maintenance and replacement.
- ◆ All-metal hot end, with the highest extruder temperature of 350°C, adapting to more materials.
- ◆ Structure optimization, reducing the risk of nozzle clogs and other problems.

Faster speed  
More stable operation  
Higher production efficiency

**20000** MM/S<sup>2</sup>  
Acceleration

**500** MM/S  
Printing Speed

**7 x 24**h  
Stable Operation

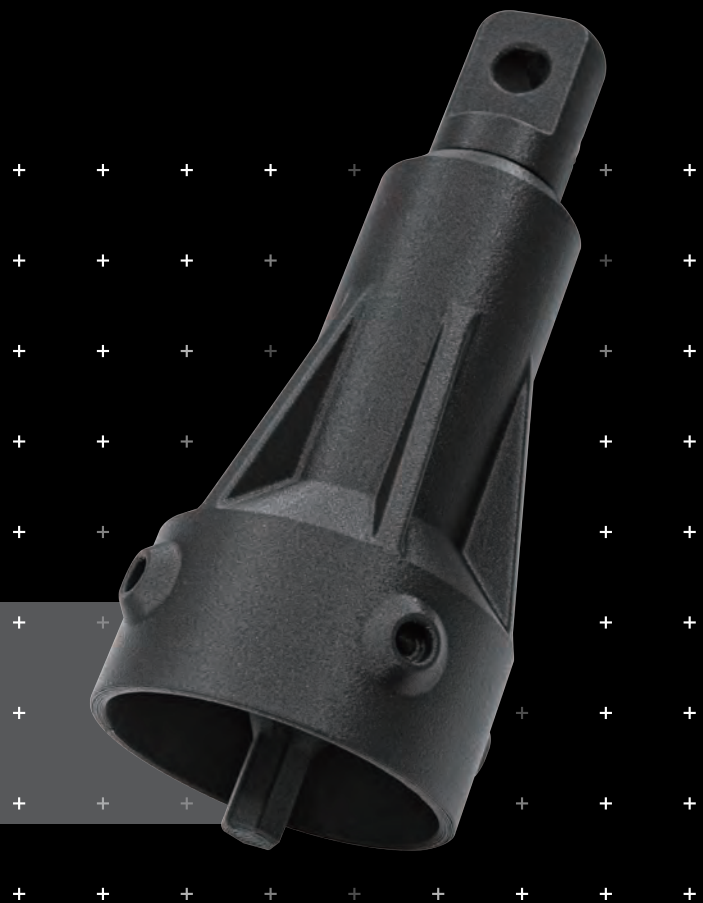
**CoreXY** Structure

Plug and Play

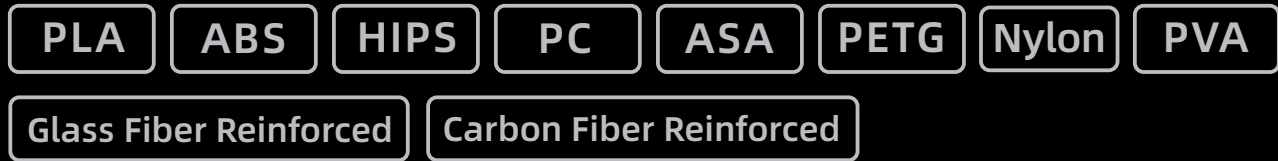


## High surface quality and finer details

Dual Z-axis ball screws ensure accurate positioning of printing each layer. With the extruder vibration suppression algorithm, unnecessary vibrations during the extruder's high-speed movement are eliminated, ensuring stable printing at high speed. Combined with the pressure compensation algorithm, the extrusion flow rate is accurately controlled, which improves the surface quality of models and yields better details.



# Open material system Compatible with third-party filaments








Note: Glass fiber reinforced and carbon fiber reinforced filaments should be used with high-strength nozzles.

## ◆ Third-party Filaments Supported

Open third-party material configuration. FlashPrint is compatible with multi-brand filaments, providing wider choices.



<b>Application Areas</b>		<b>Product Development Verification</b> <ul style="list-style-type: none"><li>• Shorten verification time</li><li>• Accelerate design optimization</li><li>• Speed up mass production while reduce costs</li></ul>
	<b>Jigs, Fixtures &amp; Parts of the Assembly Line</b> <ul style="list-style-type: none"><li>• Jigs and fixtures for assembly</li><li>• Replenish damaged equipment parts of the assembly line in time</li></ul>	 <b>Finished Parts</b> <ul style="list-style-type: none"><li>• Customized parts</li><li>• Temporary test parts</li><li>• Parts for small-batch use</li></ul>
	<b>Teaching Aids</b> <ul style="list-style-type: none"><li>• Offer 3D printing training courses</li><li>• Print out students' design</li></ul>	 <b>Architecture/Art</b> <ul style="list-style-type: none"><li>• Conceptual models</li><li>• Customized presentation</li></ul>

# Parameters

Extruder Quantity	2
Printing Precision	±0.15 mm or 0.002 mm/mm [ The larger values shall prevail ]
Positioning Accuracy	X/Y-axis 0.011 mm / Z-axis 0.0025 mm
Layer Thickness	0.05 ~ 0.4 mm
Build Volume	[Single extruder]330 x 330 x 600 mm [Dual extruders]300 x 330 x 600 mm
Nozzle Diameter	0.4 [ 0.6/0.8 mm Optional]
Nozzle Type	High-strength nozzle
Printing Speed	Max. 500mm/s
Extruder Movement Acceleration	20000mm/s <sup>2</sup>
Maximum Extruder Temperature	350 °C
Maximum Platform Temperature	120 °C
Supported Filament	PLA / PETG / ASA / ABS / PC / PA / PLA-CF / PETG-CF PETG GF / PA-CF / PA-GF
Power Supply	AC100-240V / 50-60Hz / 850W Max
Slicing Software	FlashPrint
Input/Output File Format	Input: 3MF / STL / OBJ / FPP / BMP / PNG / JPG / JPEG Output: GX/G files / Gcode
Connectivity	USB Flash Drive / Ethernet / Wi-Fi
Certification	CE / FCC / RoHS
Operation Temperature	15-30 °C
Compatible Operating System	Windows XP / Vista / 7 / 8 / 10 / Mac OS
Compatible Slicing Software	Slic3r / Cura [Need Setting]
Smart Touch Screen	7-inch
Build Plate	Flexible Steel Plate Platform

## Other Features

- Fully-enclosed Design
- Automatic Leveling
- Filament Run-out Reminder
- Replaceable Build Plate
- Quick-release Nozzle
- Power Loss Recovery
- Remote Video Monitoring
- Air Filter Net
- Cloud Platform
- Ultra-silent Design

**Zhejiang Flashforge 3D Technology Co., Ltd.**

Tel: +86 579 82273989 Email: support@flashforge.com  
No.518 XianYuan Road, Jinhua City, Zhejiang Province, China

